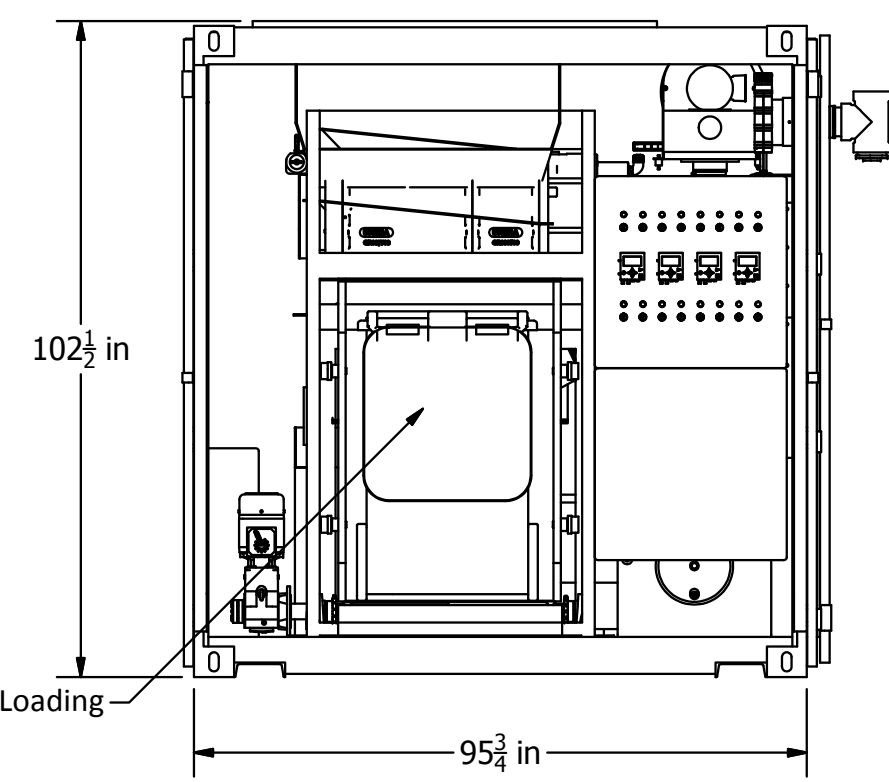
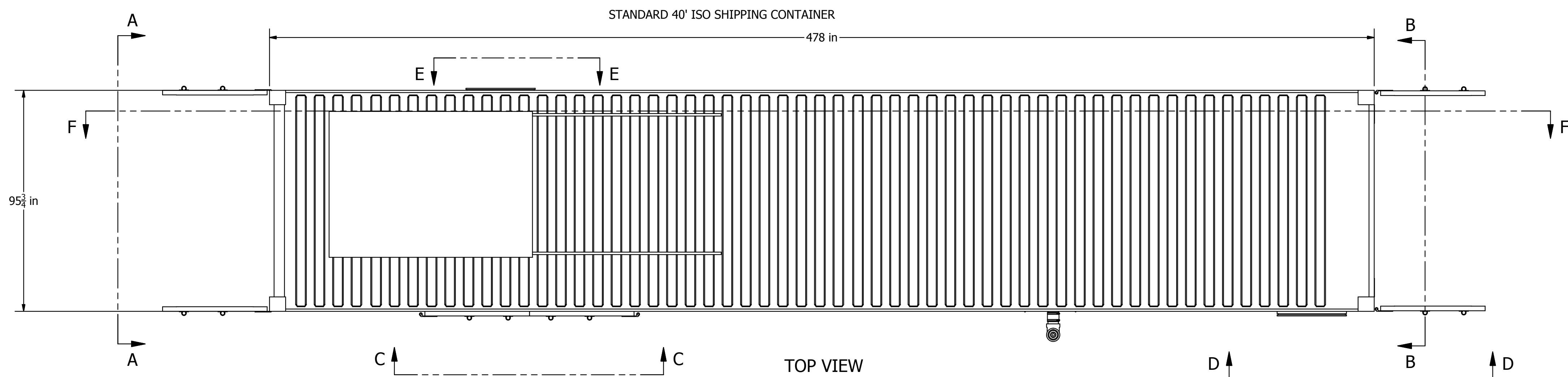


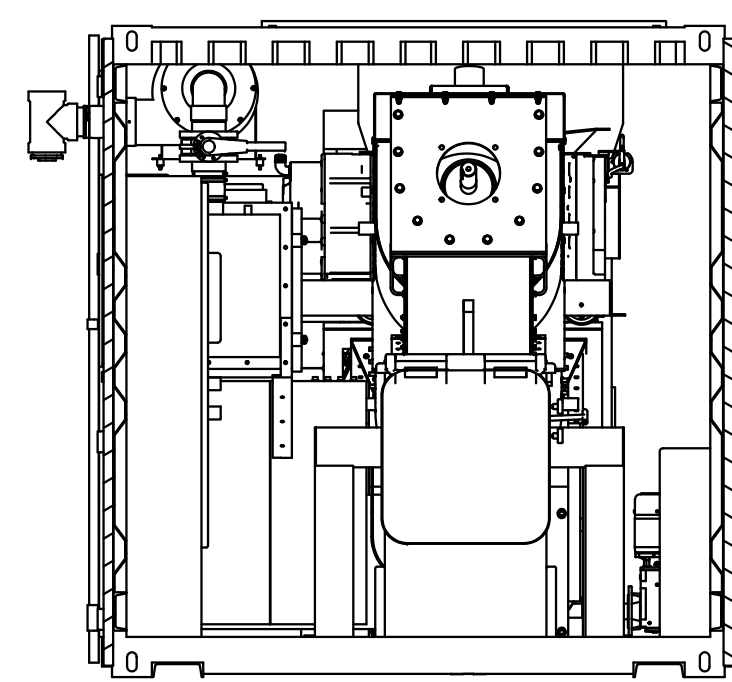
**Weights**  
 Transport Weight - 35,000 lbs  
 Operational Weight - 36,000 lbs

**Utility requirements**  
 Electrical load - 480VAC 3PH 60Hz 175A  
 (Processing system and steam generator)  
 Water - 40 psig, 1" NPT connection  
 Drain - 1-1/2" gravity flow

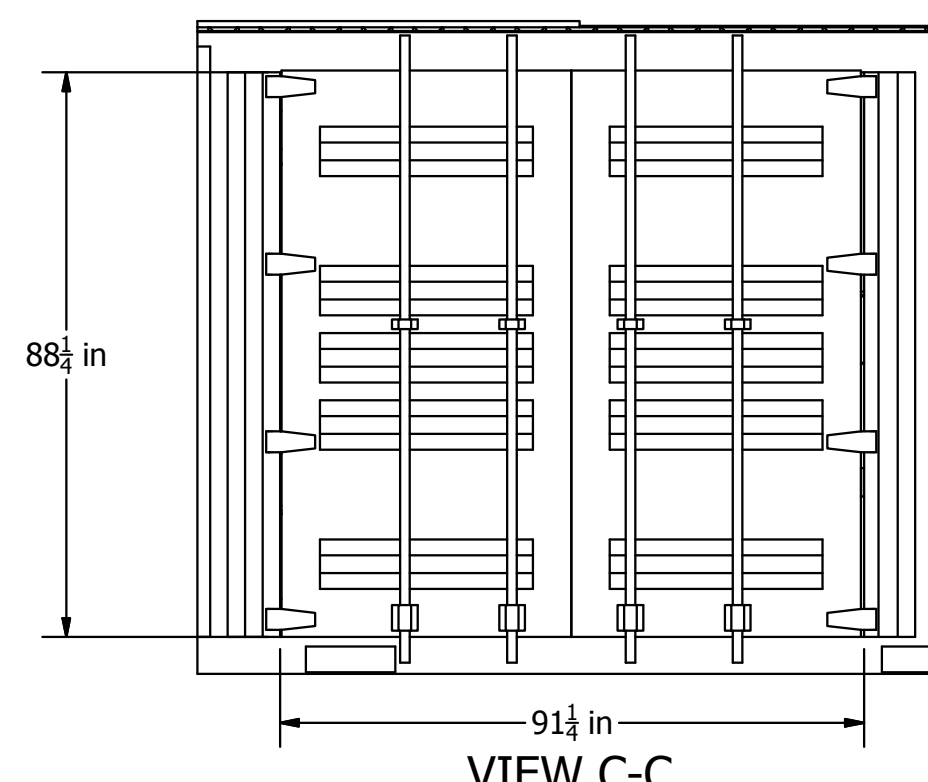
System utilizes 40 lbs of steam and 32 oz of water per 100 lbs of treated waste



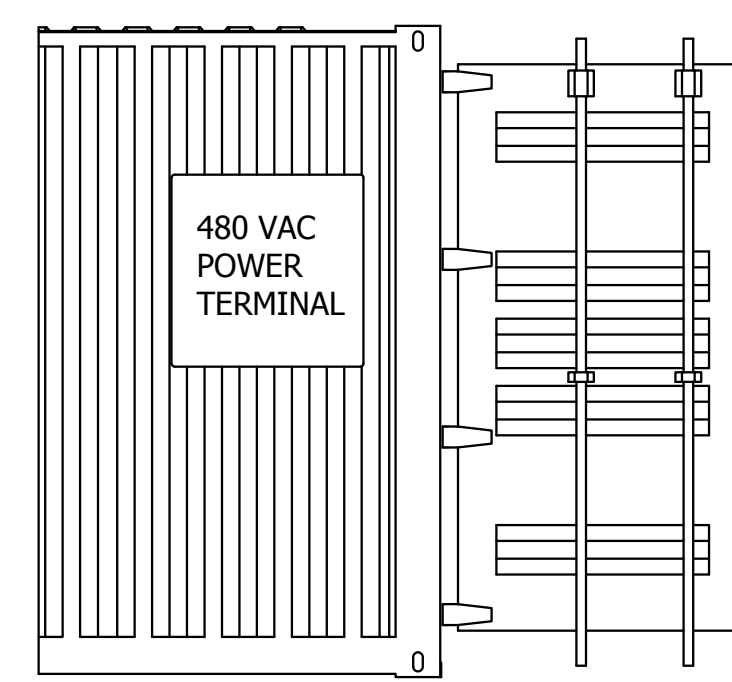
VIEW A-A  
 CART LOADING AND  
 CONTROL INTERFACE PANEL



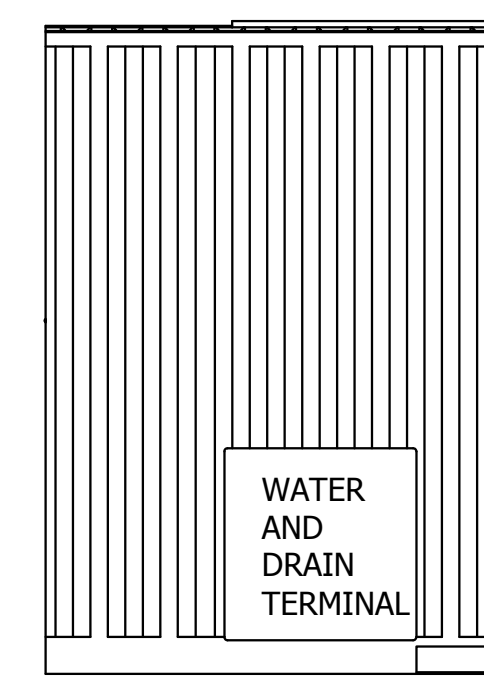
SECTION B-B  
 TREATED WASTE DISCHARGE



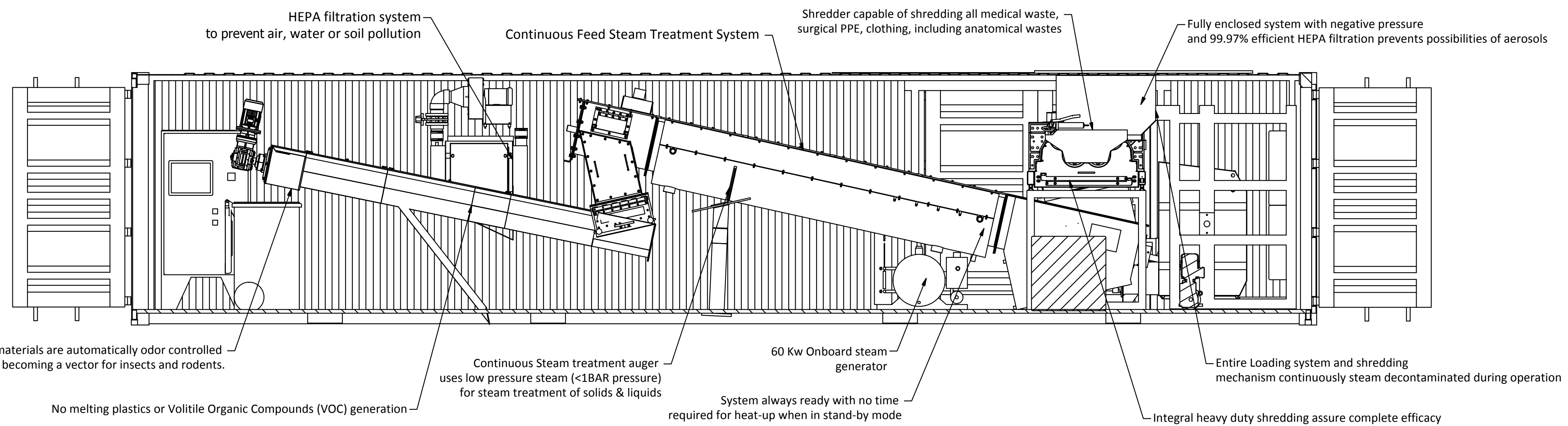
VIEW C-C  
 SHREDDER AND SYSTEM  
 MAINTENANCE ACCESS



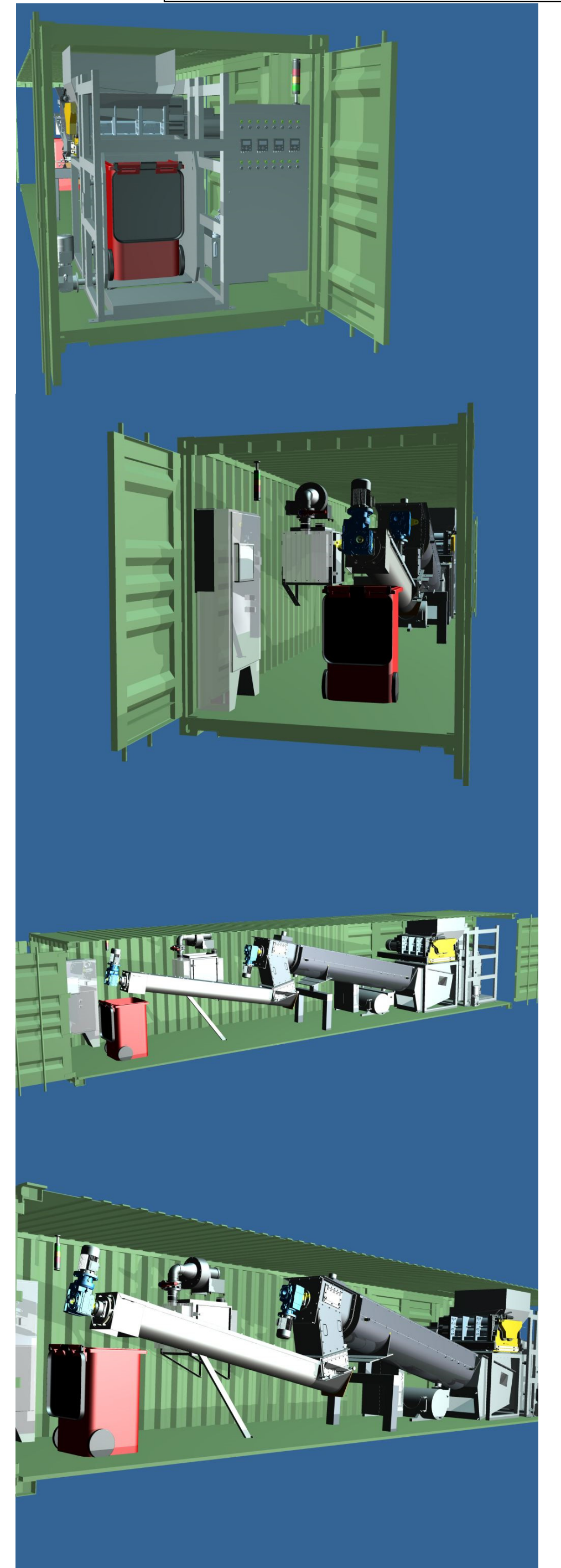
VIEW D-D  
 SCALE 1/30



VIEW E-E  
 WATER AND DRAIN  
 TERMINAL



SECTION F-F  
 SCALE 1/30



<b>STIBIOSAFE</b> MEDICAL WASTE TREATMENT SYSTEMS		
<small>ALL DIMENSIONS IN INCHES EXCEPT AS NOTED</small> <small>PROPRIETARY INFORMATION</small> <small>INFORMATION CONTAINED HEREIN IS THE SOLE PROPERTY OF STIBIOSAFE SYSTEMS, LLC. NO REPRODUCTION OR DISSEMINATION OF THIS INFORMATION SHALL BE MADE BY THE RECIPIENT TO ANY OTHER PERSON OR ORGANIZATION WITHOUT THE WRITTEN CONSENT OF STIBIOSAFE SYSTEMS, LLC.</small>		
CUSTOMER: STIBIOSAFE	DRAWN BY: [Name]	DATE: 10/13/2014
DESCRIPTION: STIBIOSAFE mobile 300	CHECKED BY: [Name]	APPROVED BY: [Name]
MATERIAL: [Blank]	DWG. SIZE: D	SCALE: [Blank]
DWG. NO: [Blank]	REV. A	SHEET 1 OF 1
DRAWING PATH: [Blank]	DWG. NO: Mobile 300 STI	