



## Model BE-Lab-80 Tissue Digester – Alkaline



- 80 lbs per cycle loading capacity
- Automatic chemical feed system
- Siemens or AB PLC control system
- 316 SS welded process piping with industrial grade valves and components
- 100% non-proprietary components
- UL and CSA listed components  
CE also available
- UL listed control system

Tissue Digester - Alkaline Systems are BioSAFE Engineering's state of the art, environmentally friendly, technology for the sterilization and disposal of bio-hazardous waste. Our time tested and validated Alkaline Hydrolysis (AH) process ensures the highest Sterility Assurance Level of any bio-waste treatment system.

This technology is supported by US and international patents with applications in life sciences, agriculture, healthcare, and bio-defense fields. Our AH systems are the leading alternative to incineration for anatomic, biological, infectious, pathologic, and rendering wastes.

BioSAFE Engineering's Tissue Digesters are available with processing capacities of 11 lbs to 10,000 lbs per cycle.

### **BioSAFE provides project support:**

- From conception to decommissioning
- Design
- Installation
- Validation
- Training
- Preventative Maintenance

### **Optional Upgrades:**

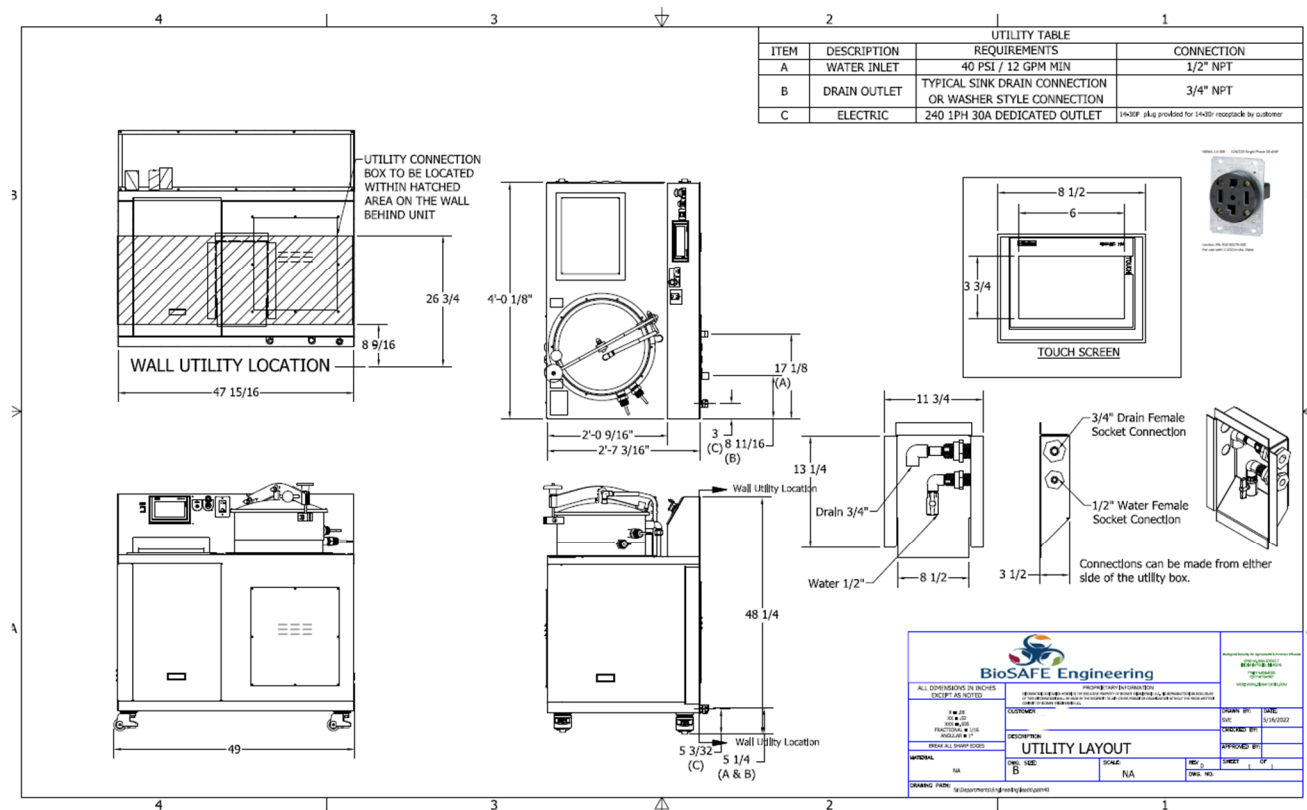
- BSL-3 and BSL-4 compliant applications
- Processing chamber configuration
- pH adjustment



**A Clean Technology Company**

## MODEL BE-Lab-80 Tissue Digester - Capacity: 80 lbs

|                        |  |
|------------------------|--|
| Operating Temp         | 205F (95 °C)   |
| Vessel Size            | 18" Internal diameter  |
| Control Cabinet        | Siemens or AB UL / CUL/ CE                                   |
| Vessel Characteristics | 316 SS wetted parts with manual locking lid                  |
| Heating Method         | Electric heating   |
| Safety Features        | Safety PLC, and ergonomic design for maintenance and loading |
| Cycle Time             | 20-24 hrs  |
| Lid Type(s)            | Manual   |
| Chemical Type          | KOH  |



| CONNECTION | SIZE                     | REQUIREMENT                 |
|------------|--------------------------|-----------------------------|
| Water      | 1/2" NPT                 | 60-80 PSI 12 GPM Min        |
| Drain      | 3/4" NPT                 |                             |
| Electrical | 240V 30A                 | Dedicated outlet            |
| Chemical   | KOH 45%                  | Automatic via internal pump |
| Ethernet   | Open Internet connection | CAT 5E Minimum              |

**A Clean Technology Company**

5750 W 80th Street • Indianapolis, IN • 46278 • 317-858-8099 • [www.biosafeeng.com](http://www.biosafeeng.com)